

Scale 1:100,000



INTERVAL OF APPROXIMATE CONTOURS 25 METERS  
RELIEF PARTIALLY SHOWN BY FORM LINES AND HATCHURES  
VERTICAL DATUM: MEAN SEA LEVEL

TRANSVERSE MERCATOR PROJECTION  
HORIZONTAL DATUM: APPROXIMATE EUROPEAN DATUM

HYDROGRAPHIC DATUM: APPROXIMATE LEVEL OF MEAN LOW WATER SPRINGS  
PURPLE NUMBERED LINES INDICATE THE 1,000-METER UNIVERSAL TRANSVERSE MERCATOR GRID; ZONE 36, INTERNATIONAL SPHEROID

BLACK NUMBERED TICKS INSIDE THE HEATLINE INDICATE THE 1,000-METER PALESTINE BILT GRID; CLARK 1880 SPHEROID  
THE LAST THREE DIGITS OF THE GRID NUMBERS ARE OMITTED

1980 MAGNETIC DECLINATION FOR CENTER OF THE SHEET IS 1°30' EASTERLY; MEAN ANNUAL CHANGE IS 0°02' EASTERLY

USERS WITHOUT EXPERTISE OR PERMISSION ON THIS MAP ARE ADVISED TO MARK HEREIN AND FORWARD DIRECTLY TO COMMANDING OFFICER, ARMY MAP SERVICE, WASHINGTON, D. C. WAYS SO FURNISHED WILL BE RETURNED OR REPLACED IF DESIRED.

Legend and Glossary section containing symbols for roads, contours, and various geographical features, along with a grid identification table.

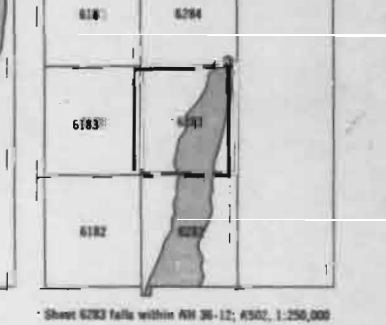
RELIABILITY DIAGRAM



INDEX TO BOUNDARIES



INDEX TO ADJACENT SHEETS



Disputed Location of B.P.(EGYPT) (ISRAEL)

W. WATIR, EGYPTIAN REGION, UNITED ARAB REPUBLIC; ARABIA; ISRAEL; JORDAN